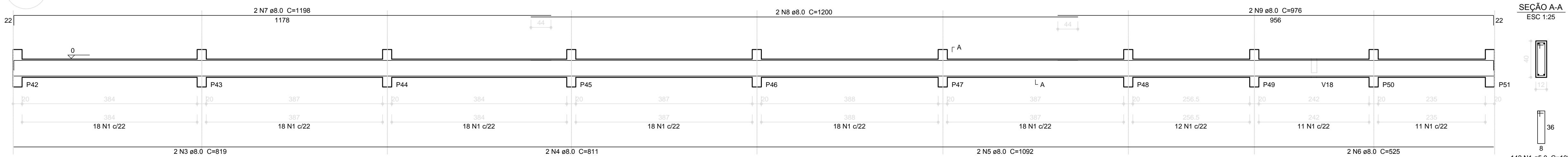
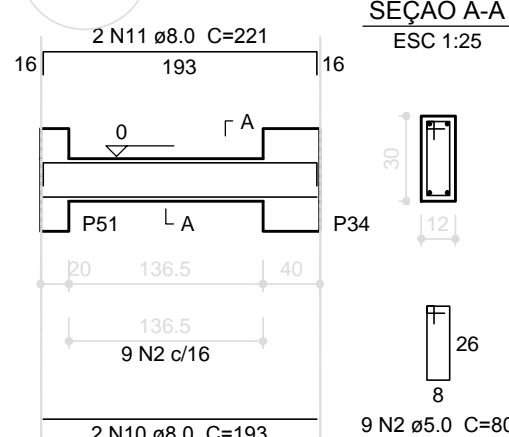
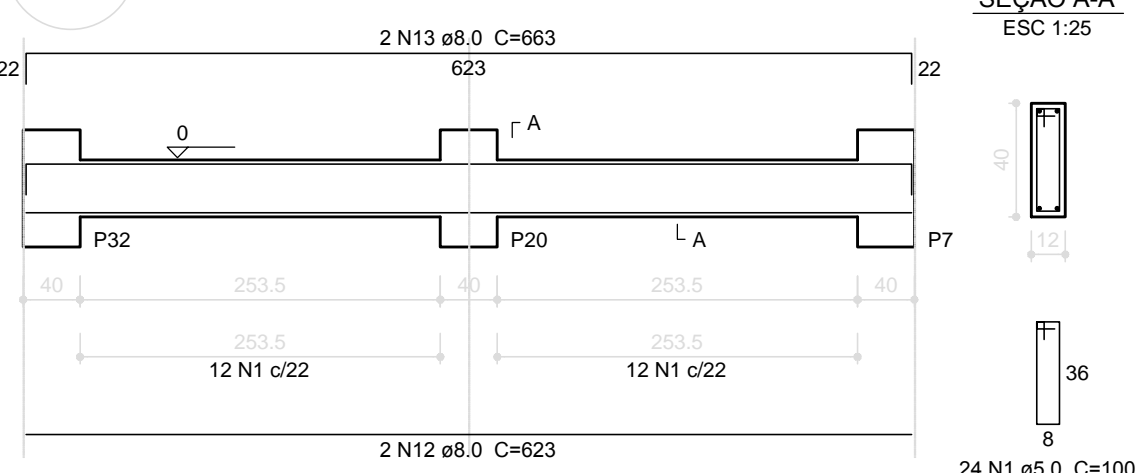
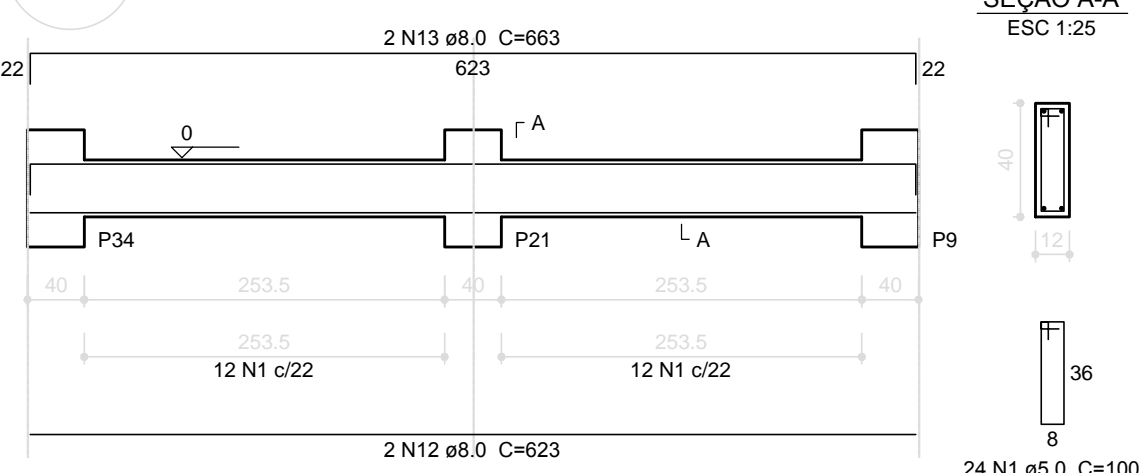
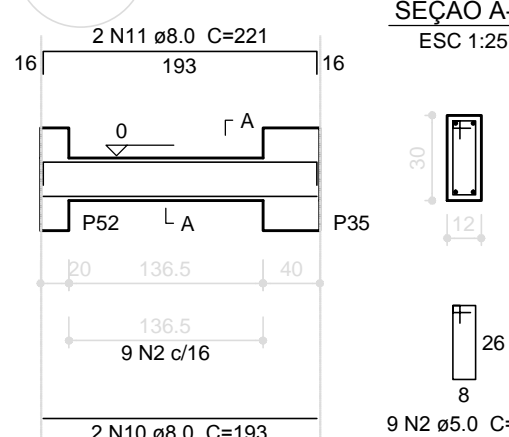
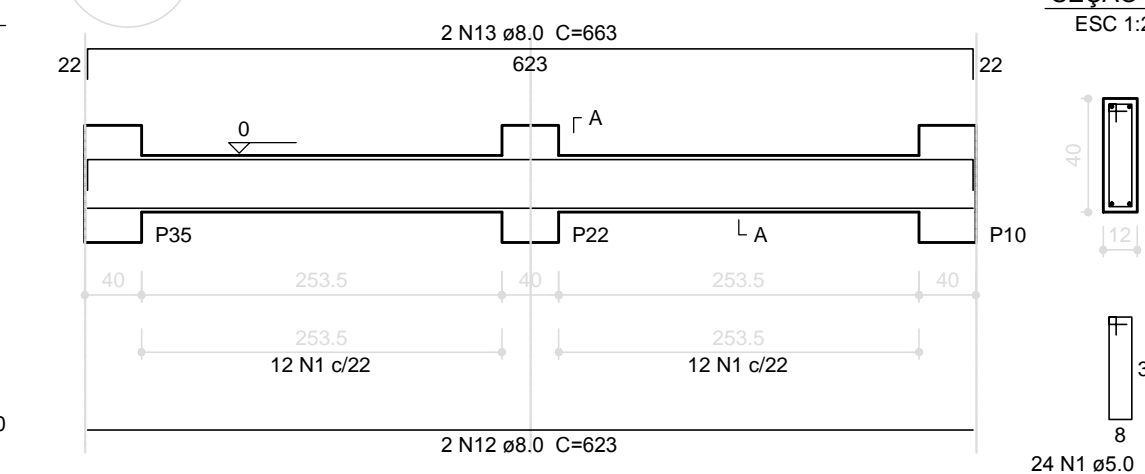
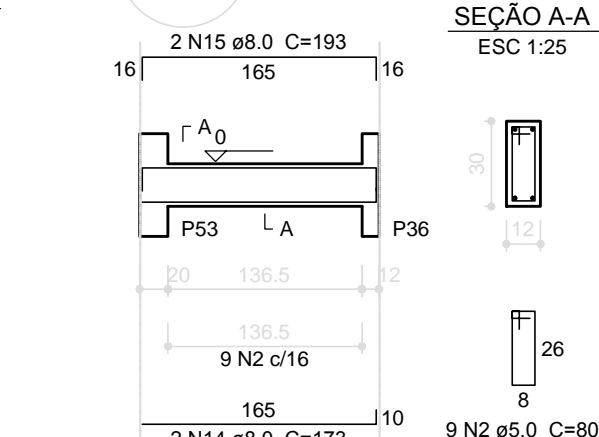
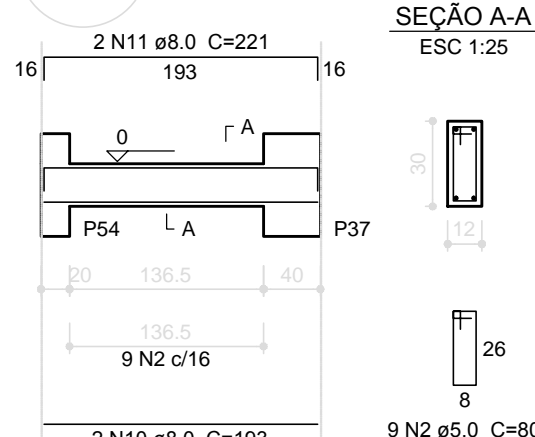
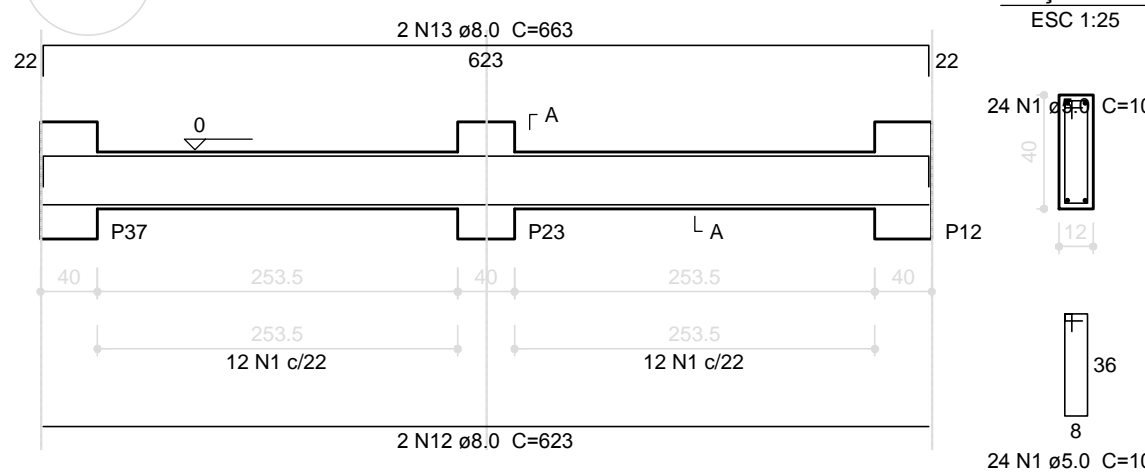
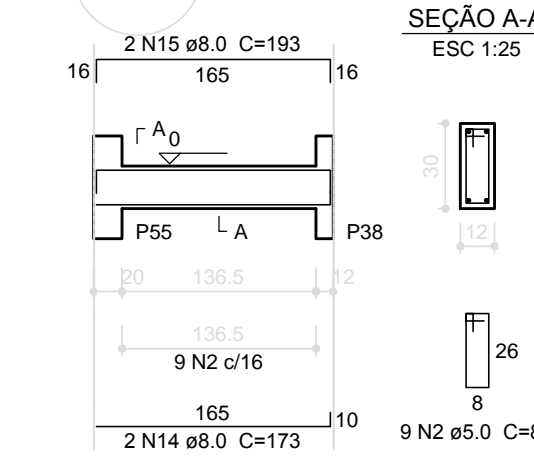
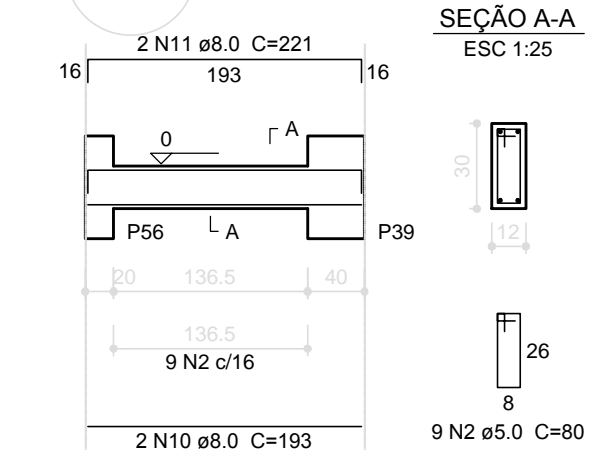
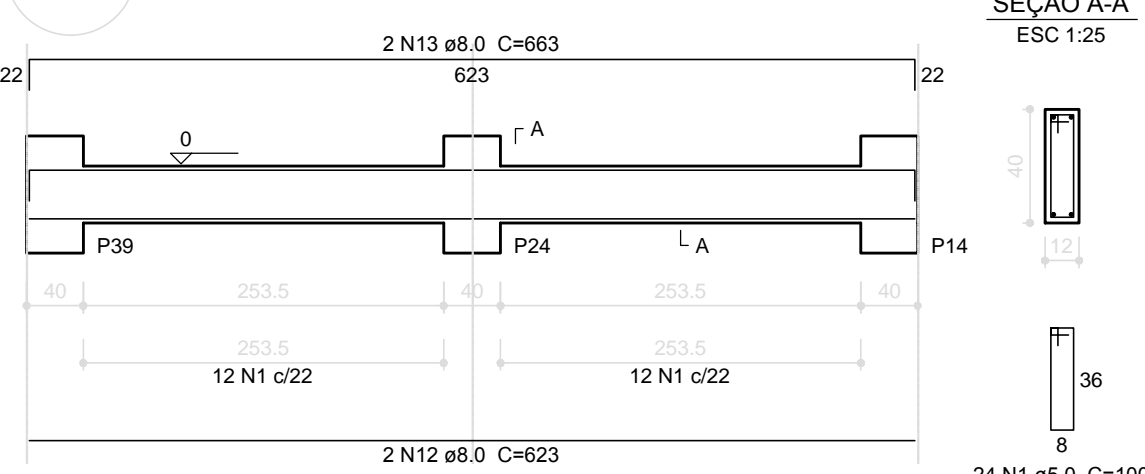
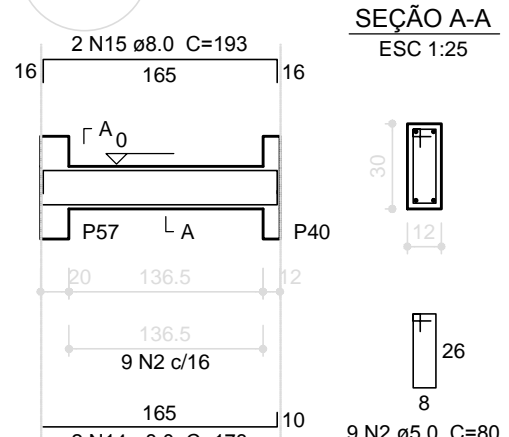
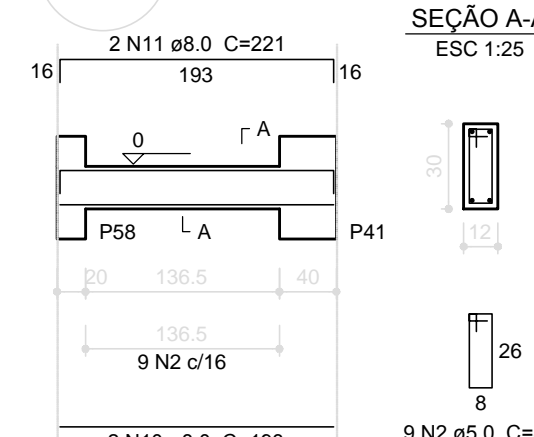
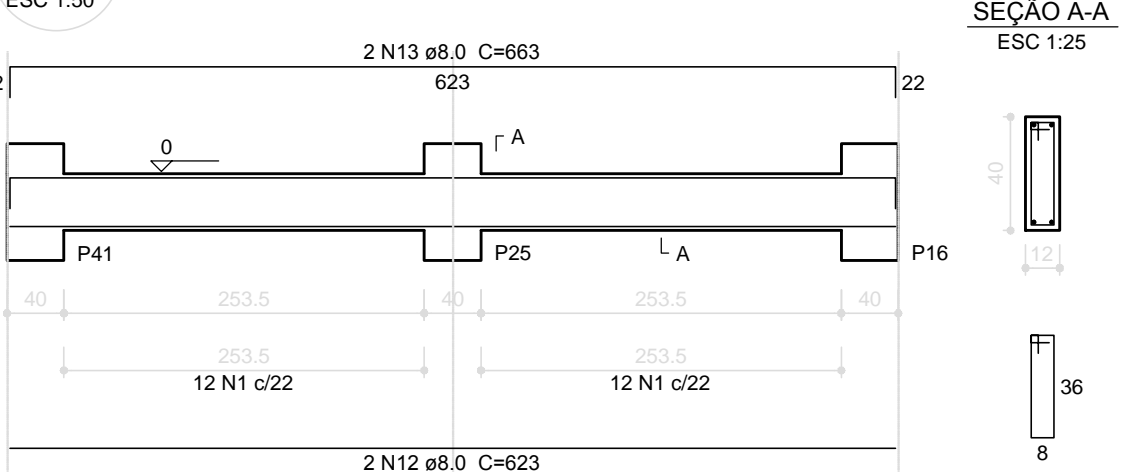


V5
ESC 1:50V19
ESC 1:50V17
ESC 1:50V20
ESC 1:50V21
ESC 1:50V22
ESC 1:50V23
ESC 1:50V24
ESC 1:50V25
ESC 1:50V26
ESC 1:50V27
ESC 1:50V28
ESC 1:50V29
ESC 1:50V30
ESC 1:50V31
ESC 1:50

Relação do aço

AÇO	N	DIAM (mm)	QUANT (Barras)	UNIT (cm)	C.TOTAL (cm)
CA60	1	5.0	286	100	28600
	2	5.0	72	80	5760
CA50	3	8.0	2	819	1638
	4	8.0	2	811	1622
	5	8.0	2	1092	2184
	6	8.0	2	525	1050
	7	8.0	2	1198	2396
	8	8.0	2	1200	2400
	9	8.0	2	976	1952
	10	8.0	10	193	1930
	11	8.0	10	221	2210
	12	8.0	12	623	7476
	13	8.0	12	663	7956
	14	8.0	6	173	1038
	15	8.0	6	193	1158

Resumo do aço

AÇO	DIAM (mm)	C.TOTAL (m)	PESO + 10 % (kg)
CA50	8.0	350.1	152
CA60	5.0	343.6	58.3
PESO TOTAL (kg)			
CA50	152		
CA60	58.3		

Volume de concreto (C-25) = 3.9 m³
Área de forma = 75.23 m²

1

VIGAS NÍVEL 000
ESCALA: INDICADA

PROJETO PADRÃO - FNDE

MUNICÍPIO - UF:

PROPRIETÁRIO:

ENDEREÇO:

PROPRIETÁRIO

RESP. TÉCNICO CAU/ CREA

DLFO CAU/ CREA

RA

OBSERVAÇÕES:

ESCOLA 6 SALAS DE AULA
PROJETO DE ESTRUTURA

COORDENAÇÃO CGEST - Coordenação Geral de Infraestrutura Educativa	VIGAS NÍVEL 000 (BLOCO PEDAGÓGICO)	SCV
REVISÃO R.02	ESCALA INDICADA DATA EMISSÃO FEVEREIRO/2014	PRANCHA 04/32
FORMATO A1 (841X594)		